



RECP #: 752846

RECORDED 5/8/2019 AT 1:20 PM BK# 2620 PG# 1888
Debra K. Lee, CLERK OF LARAMIE COUNTY, WY PAGE 1 OF 1

STATE OF WYOMING CORNER RECORD

(In compliance with the CORNER PERPETUATION AND FILING ACT, Wyoming Statutes, 1997 Section 33-29-140, et. seq., and the Rules and Regulations of the Board of Registrations for Professional Engineers and Professional Land Surveyors)

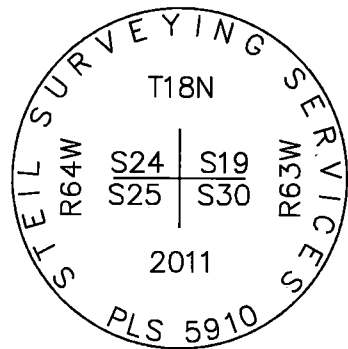
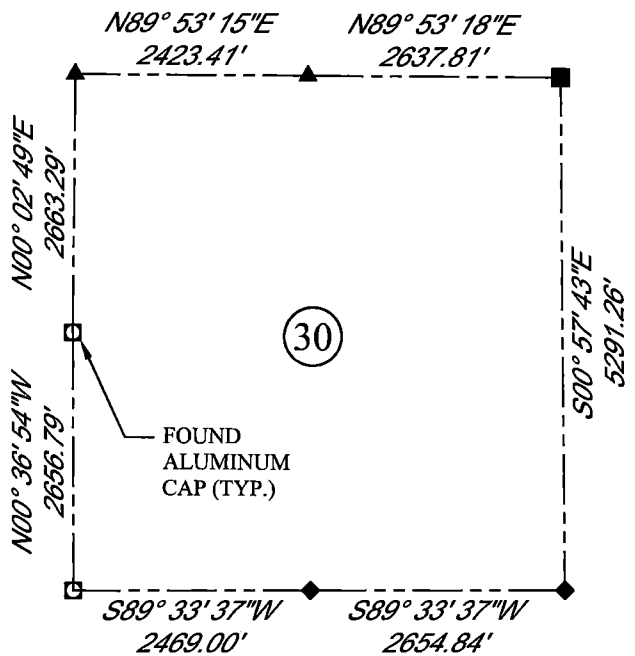
WEST QUARTER CORNER SECTION 30, T. 18 N., R. 63 W., 6TH P.M., LARAMIE COUNTY, WYOMING

GLO: SET A SANDSTONE 18X10X6, 12 IN. DEEP MARKED 1/4 ON WEST SIDE FOR 1/4 SEC. CORNER.

FOUND: 3.25" ALUMINUM CAP, 0.1' ABOVE SURFACE, BETWEEN 2 SANDSTONES MARKED AS SHOWN, STAMPING IS INCORRECT.



SCALE: 1" = 2000'
NORTH DETERMINED BY
G.P.S OBSERVATIONS



LEGEND:

- FOUND BLM CAP
- FOUND USFS CAP
- FOUND STONE
- FOUND PRIVATE MONUMENT
- ◆ CALCULATED POSITION
- ▲ SET MONUMENT (LS10245)
- SECTION LINE

DATE OF FIELD WORK: 08/23/2018 OFFICE REFERENCE: 746049

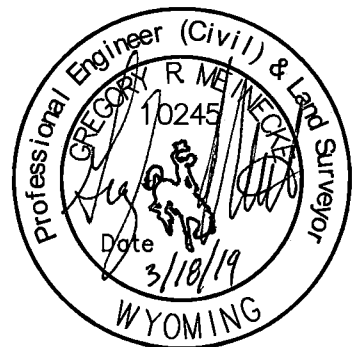
CROSS INDEX DIAGRAM

	1	2	3	4	5	6	7	8	9	10	11	12	13	14	15	16	17	18	19	20	21	22	23	24	25
A																									
B																									
C		6																							
D																									
E																									
F																									
G		7																							
H																									
J																									
K																									
L		18																							
M																									
N																									
O																									
P		19																							
Q																									
R																									
S																									
T		30																							
U																									
V																									
W																									
X		31																							
Y																									
Z																									
	1	2	3	4	5	6	7	8	9	10	11	12	13	14	15	16	17	18	19	20	21	22	23	24	25

WOOD
2615 AVIATION DRIVE
SHERIDAN, WY 82801
PH: 307-675-6400

wood.

THIS CORNER RECORD WAS
PREPARED BY ME OR UNDER
MY DIRECTION AND
SUPERVISION,
SEAL AND SIGNATURE



CORNER NAME: WEST QUARTER CORNER
SBRPELS/PLSW: MARCH 1994; PLSW JANUARY 1998

SECTION: 30 T. 18 N., R. 63 W. ; 6TH P.M. CROSS-INDEX # T-1